



SPECIAL POINTS OF INTEREST:

- **Scorecard – Jonar is first in class**
- **New JAS features— Look at what we’ve done!**
- **Visual JSI—Get it now!**
- **EDI— Must-Have New Features**

INSIDE THIS ISSUE:

Scanning	2
Costing Made Easy	2
Web Interface	2
Customized Royalty Reports	2
Automatic E-mail Function	3
VMI	5

APPAREL MAGAZINE TOP 50 SCORECARD

In the May 2007 edition of Apparel Magazine, a survey was conducted of apparel software customers. The results highlighted the top 50 companies. We are very proud of being in the top 15 of all categories.

Jonar’s results:
Best in ERP -
Tied for top
Best in Overall Satisfaction -
Tied for top
Best in ROI -
Tied for top

Jonar is also included in the list that recognizes “Break-Out Leaders” in ERP. The following comment was published in the report:

“I would recommend Jonar Systems to any apparel company. The staff is very knowledgeable in all aspects of the business and their software. They are very courteous to the clientele. This company truly caters to the garment industry hands-down when they are put up against the competition. They rank at the top of my list.”

A Special thanks to all our customers who participated in filling out the scorecard



Welcome to the latest edition of Jonar’s Press Release.

The new features listed inside are currently available.



Some items are part of the standard package and will be installed with the upgrade for all supported customers.

Other items are chargeable functions, and often include customized forms or reports, designed by each individual customer.



Call our support team or email our support desk at jonar@jonar.com to obtain detailed documentation on any or all of these new features.



Scanning

This new function allows you to scan documents that are faxed, mailed in or hand-delivered, such as Proof of Delivery, Accounts Payable Invoices, or Shipment in Transit documents.

Once scanned, you will be

able to view the documents from the corresponding modules in the JAS system, e.g. view the Proof of Delivery from the pick ticket browse screen.

In addition to viewing the information, you will be able to print/fax/email any of the scanned documents from the JAS module. Your company could be virtually paperless in no time.

Print/Fax/Email any of the scanned documents from the JAS module.

Ship to Store

How much time are you spending when a large trading partner wants you to ship to each store individually at the last minute? A new JAS/EDI function will now load the orders as "Direct to Store" or generate "DC" shipping.

Pick Tickets, Labels and Invoicing for numerous stores at one time are now accomplished by a few clicks of the mouse. A Pick/Pack option is also available, which allows you to automatically generate BOL's from

your pick tickets and print a special pick ticket with each MH10 label. Detailed documentation is available.

Load the orders as "Direct to Store" or generate "DC" shipping.

Shipment Costing

This function will accurately calculate the shipment cost on a style-by-style basis. You can now enter the complete amount of a Shipping Invoice (Brokerage

Duty, Freight, etc.) and the program will break-down the cost of each unit of each style.

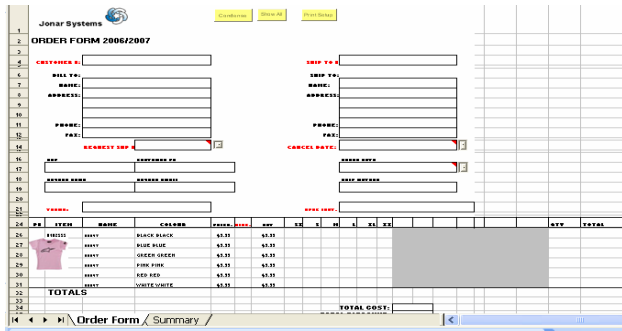
Detailed documentation is available.

Royalty Reports for Licensors

Are you spending valuable time manually creating complicated reports for your Licensors? We can replicate these reports for you, using the information that already exists in JAS. Send us your samples for evaluation.

Royalty Report

EXCELent TIME SAVER



Everyone uses Excel. It is a powerful tool that allows you the flexibility of creating reports exactly the way you want. But, how much time, everyday, are your employees spending to enter up-to-date information into their spreadsheets?

We can generate these reports directly from JAS. This will not only save time but will avoid data entry errors as well. Send us samples of these spreadsheets and compare our programming costs to your employees' time.

JAS WEB DESQ

This feature offers you the ability to use the power of the Internet to market and sell your products. Your customers and Salesreps can enter orders, view their styles and inquire on product availability. Prospective

vendors can obtain up-to-date specifications, etc. The Website links to JAS so that up-to-date product information is always available. Of special interest are: Mannequin—Allows your

customers to mix your coordinates on a mannequin and see the results. Store Locator— Allows anyone accessing the Website to see what stores in their area offer your product.

Visit JAS.WEBDESQ.COM for more information or call Jonar.

FORECASTING

Generate accurate forecasts based on previous sales trends. You can base your calculations on last year, last season, or last month. It is entirely up to you. This is like your own personal crystal ball!

This is like your own personal crystal ball!

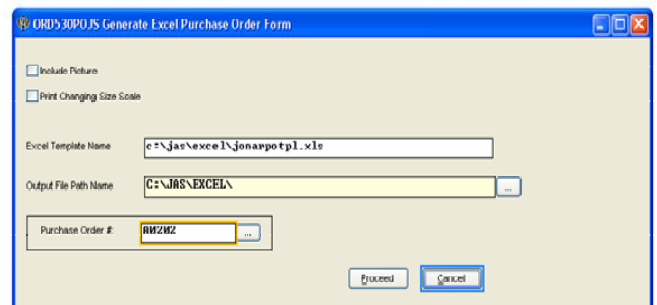
GLOBAL PICK TICKET MODIFICATION

Previously, pick tickets had to be modified one at a time. Now you can select multiple pick tickets for modification. This will save you a lot of time.

PO / SHIPMENT EXCEL

If you are already using our Order Excel function, you know what a valuable tool it is. The new PO/ Shipment Excel programs will be just as beneficial. Your JAS PO will be converted to an Excel format, based on your customized design. The Excel file

will be emailed to your vendor who will enter the quantities being shipped. The returning file will be loaded into JAS to automatically create and update shipment in transit.



Generate Excel PO

EDI

ASN - PACKING CRITERIA

This new boxing method uses pre-determined or pre-entered criteria to automatically box Purchase Orders.

CREATE ASN FROM PICKING TICKETS

This new option adds the ability to use JAS pick tickets to create entire EDI shipments, saving multiple intermediate steps.

PO LOAD VERIFICATION

There is a new option to load discounts from the EDI PO and validate them against existing discounts in the customer file.

You can validate the EDI PO Price against the JAS price.

The order can then be prevented from loading if there is a discrepancy.

MH10 BY REGION

You can choose to create and print MH10 labels by region. This option removes the manual time previously required to manually re-sort the labels so that the orders can be shipped to each region.

STORE REPLENISHMENT (VMI)

This feature works in conjunction with EDI trading partners using the 852/855 replenishment program.

852 Generation – The 852 calculates using the average stock on hand, plus sales reported by the trading partner for the last 4 weeks for each style/store. If the totals are lower than the pre-set minimum levels, the replenishment value will be increased by the difference between the total and the minimum set.

855 Generation – The 855 is a request for a PO that is sent to the trading partner based on the information in the 852.

*852/855
Replenishment*

865 TRANSACTION

You can now create an 865 transaction from JAS Pick Tickets. An 865 is a PO change request, initiated by the vendor. We have recently developed the ability to take the JAS Pick Tickets and reflect the quantities to be short-shipped.



VISUAL JSI ANNOUNCEMENT

For all our customers who are still using the DOS version of JSI Payables, GL and/or Payroll; the visual version of JSI (VJSI™) is available and documentation pertaining to it has been sent out to all concerned. Many of our customers are already using this version, so we consider it to be tried and true. Call us if you require the documentation again, or to schedule your JSI Visual installation.



Jonar Systems

5645 Chemin St Francois
St Laurent QC H4S 1W6

Phone: 514-335-5525
Fax: 514-335-5529
E-mail: jonar@jonar.com

“Its our business to make yours better”

JONAR SYSTEMS INC. (JSI) offers its clients turnkey application software, installation, training, support and consulting services. The application systems are tailored to vertical markets in the Manufacturing, import and Distribution sectors of the Apparel (JAS™) and Hardgoods (JSI+) industries.

The main goal of **JSI** is to deliver **cost-effective solutions**, providing timely information so that owner/managers can effectively run their organizations in an easy to use manner.

For additional information please contact:

Stephen Ruby — President

sales@jonar.com